

4

3

2

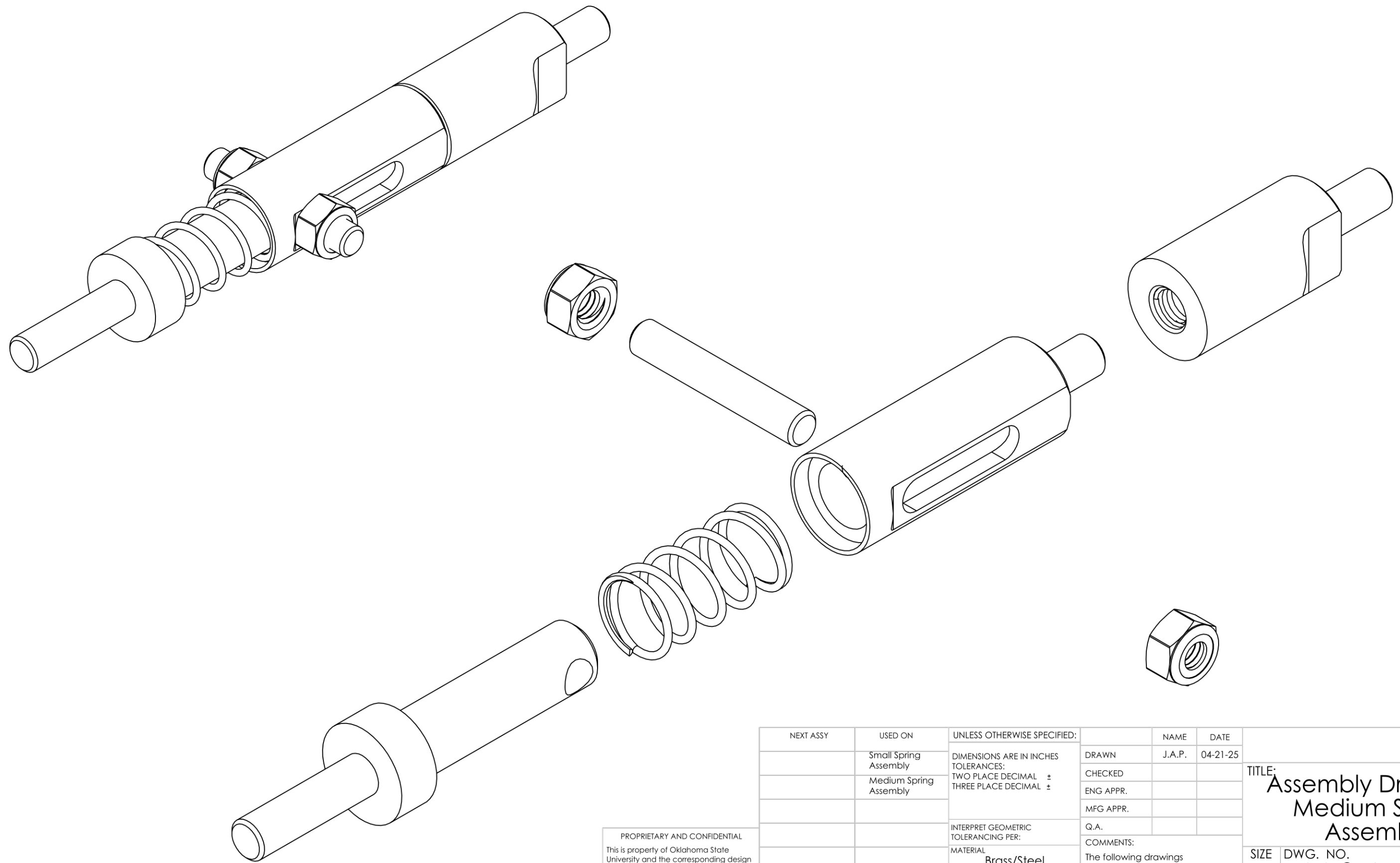
1

B

B

A

A



PROPRIETARY AND CONFIDENTIAL
 This is property of Oklahoma State University and the corresponding design team.

NEXT ASSY	USED ON	UNLESS OTHERWISE SPECIFIED:	NAME	DATE	TITLE: Assembly Drawings: Medium Spring Assembly
	Small Spring Assembly	DIMENSIONS ARE IN INCHES TOLERANCES: TWO PLACE DECIMAL ± THREE PLACE DECIMAL ±	DRAWN J.A.P.	04-21-25	
	Medium Spring Assembly		CHECKED		SIZE DWG. NO. REV B M.S.A-01 2
			ENG APPR.		
			MFG APPR.		COMMENTS: The following drawings are step instruction for Small Spring Assembly. These drawings will be equivalent to the Small size Rotor Rig.
			Q.A.		
		INTERPRET GEOMETRIC TOLERANCING PER: MATERIAL Brass/Steel			SCALE: 1:2 WEIGHT:
		FINISH N/A			SHEET 1 OF 3
APPLICATION	Rotor Rig	DO NOT SCALE DRAWING			

4

3

2

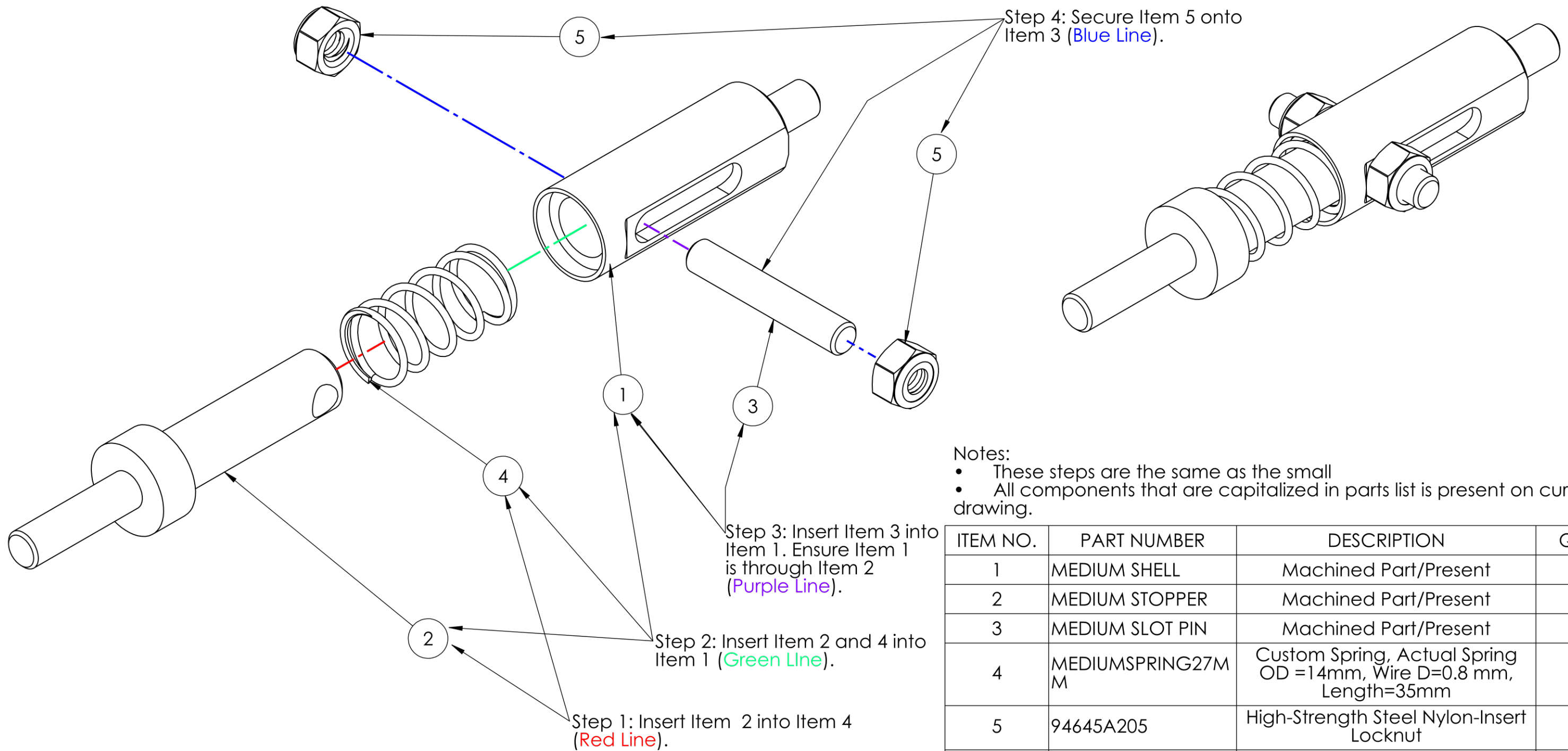
1

4

3

2

1



Notes:

- These steps are the same as the small
- All components that are capitalized in parts list is present on current drawing.

ITEM NO.	PART NUMBER	DESCRIPTION	QTY.
1	MEDIUM SHELL	Machined Part/Present	1
2	MEDIUM STOPPER	Machined Part/Present	1
3	MEDIUM SLOT PIN	Machined Part/Present	1
4	MEDIUMSPRING27M M	Custom Spring, Actual Spring OD =14mm, Wire D=0.8 mm, Length=35mm	1
5	94645A205	High-Strength Steel Nylon-Insert Locknut	2
6	Medium Extension	Machined Part/Not Present	1

PROPRIETARY AND CONFIDENTIAL
This is property of Oklahoma State
University and the corresponding design
team.

NEXT ASSY	USED ON	UNLESS OTHERWISE SPECIFIED:	NAME	DATE	TITLE: Assembly Drawings: Medium Spring Assembly SIZE DWG. NO. REV B M.S.A-02 2 SCALE: 1:2 WEIGHT: SHEET 2 OF 3
	Small Spring Assembly	DIMENSIONS ARE IN INCHES TOLERANCES: TWO PLACE DECIMAL ± THREE PLACE DECIMAL ±	DRAWN	J.A.P. 04-21-25	
	Medium Spring Assembly		CHECKED		
			ENG APPR.		
		INTERPRET GEOMETRIC TOLERANCING PER:	MFG APPR.		
		MATERIAL Brass/Steel	Q.A.		
		FINISH N/A	COMMENTS: The following drawings are step instruction for Small Spring Assembly. These drawings will be equivalent to the Small size Rotor Rig.		
APPLICATION	Rotor Rig	DO NOT SCALE DRAWING			

4

3

2

1

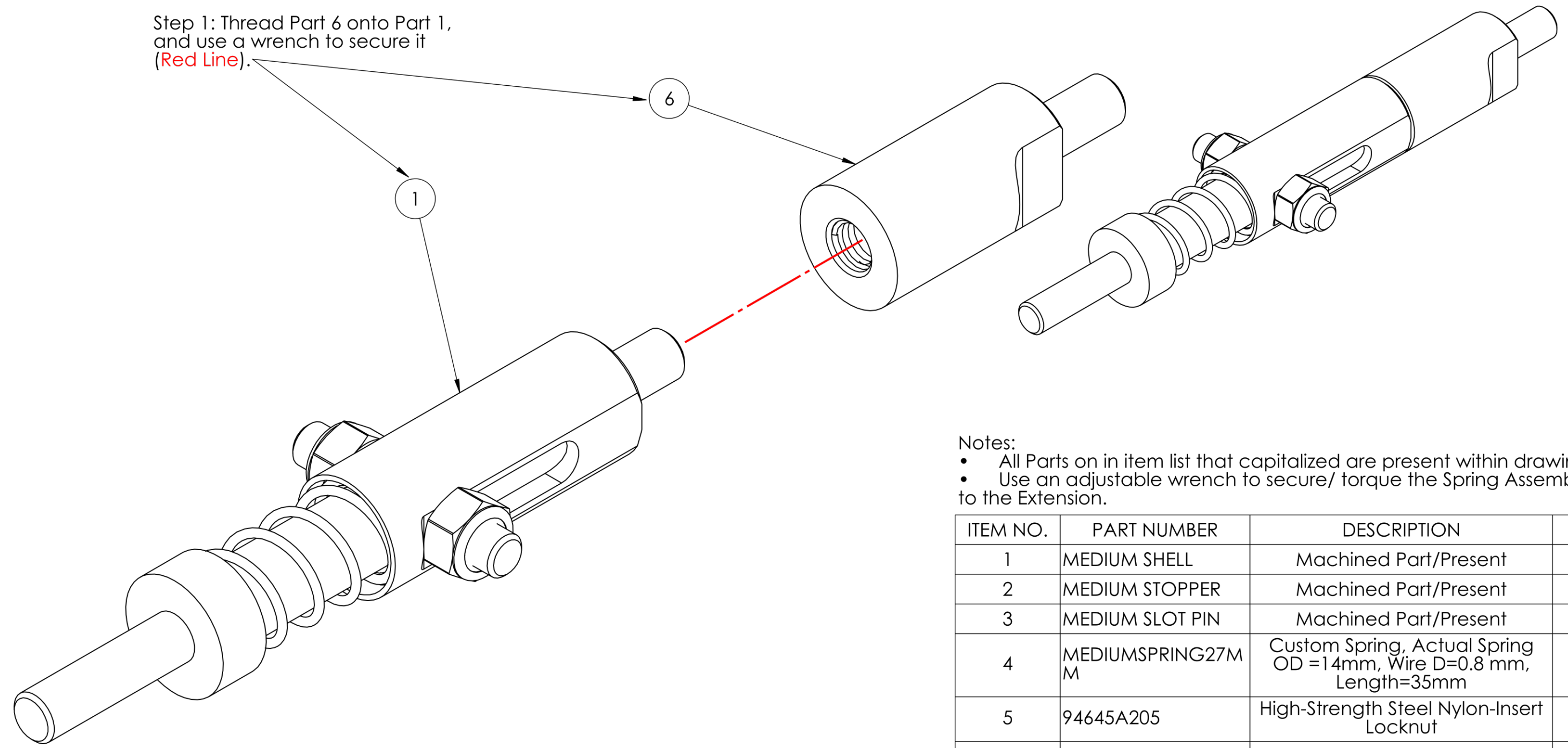
4

3

2

1

Step 1: Thread Part 6 onto Part 1, and use a wrench to secure it (Red Line).



Notes:

- All Parts on in item list that capitalized are present within drawing.
- Use an adjustable wrench to secure/ torque the Spring Assembly to the Extension.

ITEM NO.	PART NUMBER	DESCRIPTION	QTY.
1	MEDIUM SHELL	Machined Part/Present	1
2	MEDIUM STOPPER	Machined Part/Present	1
3	MEDIUM SLOT PIN	Machined Part/Present	1
4	MEDIUMSPRING27M M	Custom Spring, Actual Spring OD =14mm, Wire D=0.8 mm, Length=35mm	1
5	94645A205	High-Strength Steel Nylon-Insert Locknut	2
6	MEDIUM EXTENSION	Machined Part/Not Present	1

NEXT ASSY	USED ON	UNLESS OTHERWISE SPECIFIED:	NAME	DATE	TITLE: Assembly Drawings: Medium Spring Assembly
	Small Spring Assembly	DIMENSIONS ARE IN INCHES TOLERANCES: TWO PLACE DECIMAL ± THREE PLACE DECIMAL ±	DRAWN	J.A.P. 04-21-25	
	Medium Spring Assembly		CHECKED		
			ENG APPR.		
		INTERPRET GEOMETRIC TOLERANCING PER:	MFG APPR.		SIZE DWG. NO. REV B M.S.A-03 2
		MATERIAL	Q.A.		
		FINISH	COMMENTS:		
			The following drawings are step instruction for Small Spring Assembly. These drawings will be equivalent to the Small size Rotor Rig.		SCALE: 1:2 WEIGHT: SHEET 3 OF 3
APPLICATION	Rotor Rig	DO NOT SCALE DRAWING			

PROPRIETARY AND CONFIDENTIAL
 This is property of Oklahoma State University and the corresponding design team.

4

3

2

1